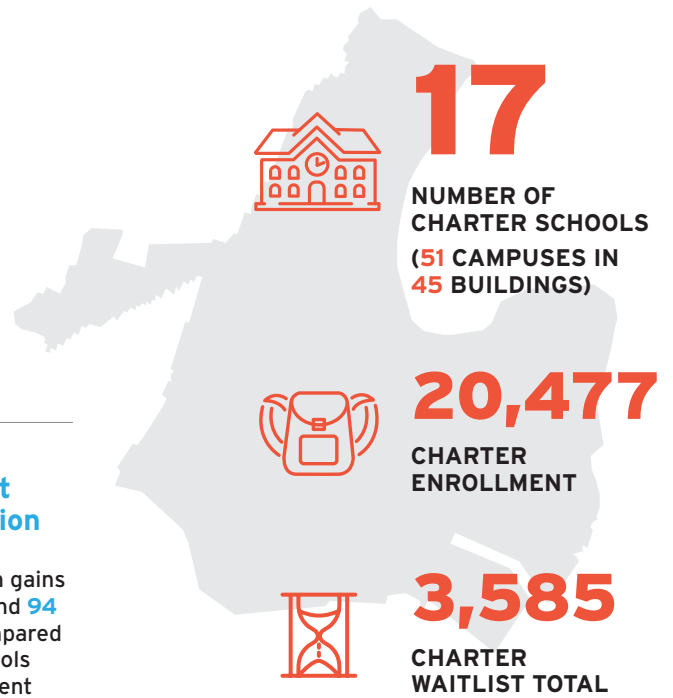


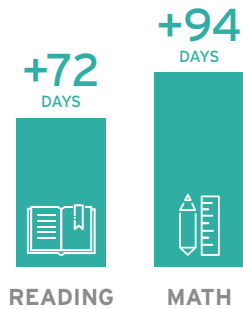
# Newark Charter School Facts

JANUARY 2022

## ENROLLMENT



## PERFORMANCE



### Newark charter schools post best student learning gains in the nation

Students learn more in charter schools with gains of **72 additional days per year in reading** and **94 additional days per year in math** when compared to the state average. Newark's charter schools also outperform Newark's selective enrollment magnet schools in Math three years in a row.

Source: 2021 CREDO Stanford University Research

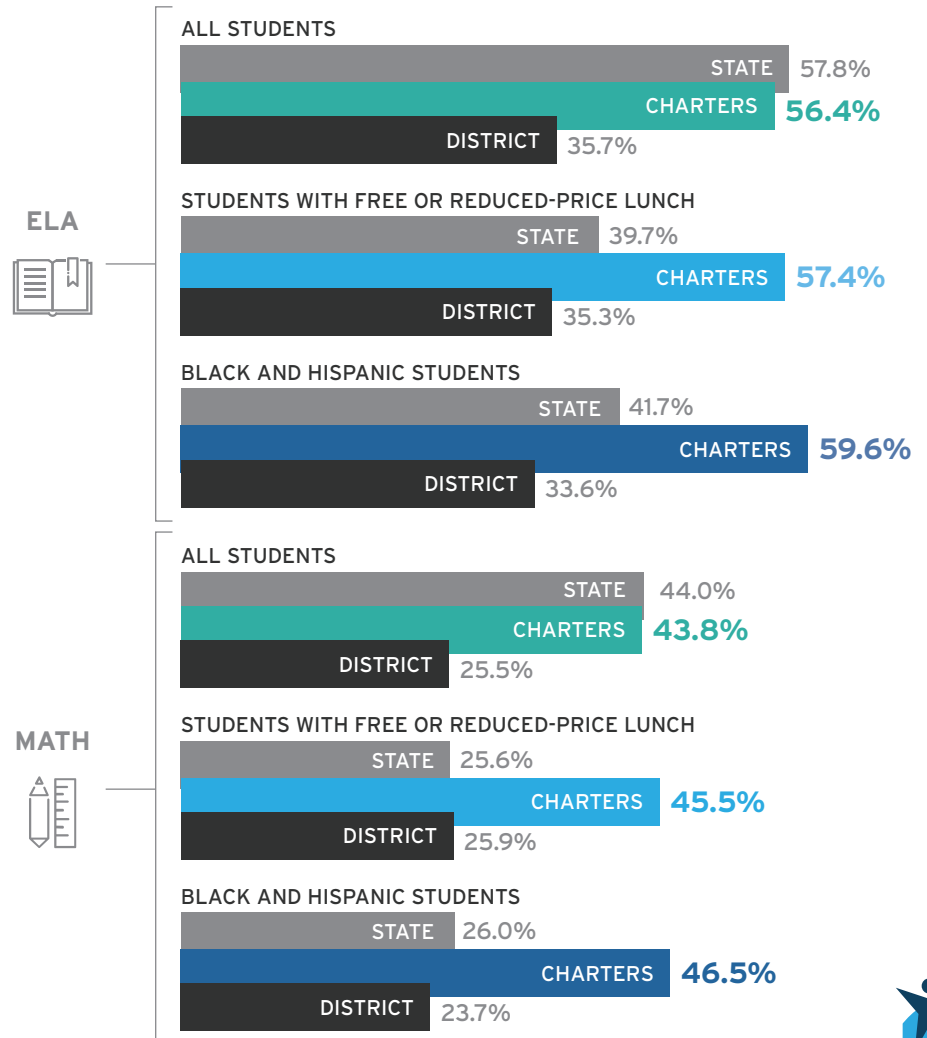
## Newark has the #1 charter sector in the nation.

NJ has the #1 education system in the nation. Newark's public charter school students, **84% of whom come from low income backgrounds**, have outperformed the state average on the state test two years in a row.

**75%** of Newark's charter school students are enrolled in a school beating the odds vs. 16% in the district.\*

\*2020 study from MarGrady Research

## 2018-19 Student Achievement Grades 3-11 (Proficiency Rates)

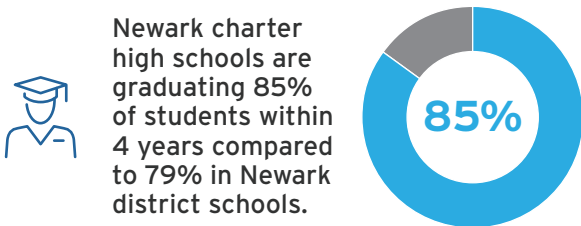


## FUNDING



Charter schools in Newark receive **\$3,259 less**, per student, than district schools.

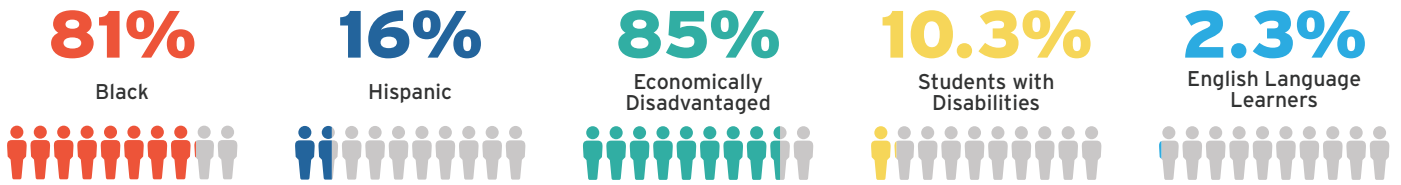
## GRADUATION RATE



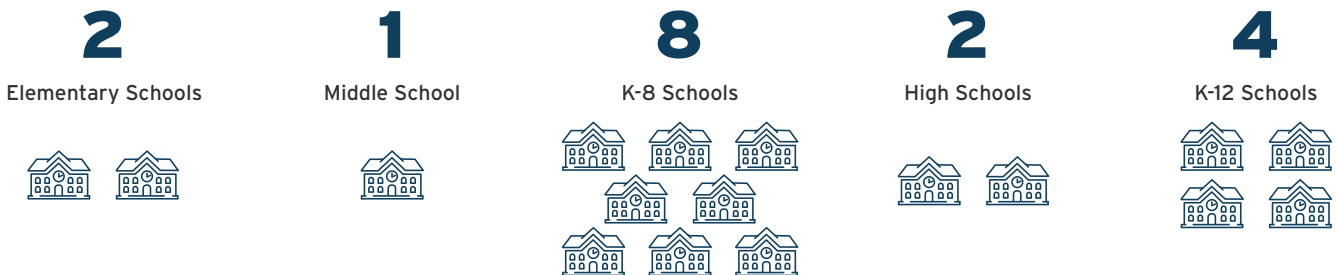
## SCHOOLS

Achieve Community Charter School (2017, K-8)	346
Discovery Charter School (1999, 4-8)	100
Gray Charter School (2000, K-8)	364
Great Oaks Legacy Charter School (2011, PreK-12)	1,822
LEAD Academy Charter School (2017, 9-12)	235
Link Community Charter School (2014, K-8)	299
Maria L. Varisco-Rogers Charter School (1999, K-8)	558
Marion P. Thomas Charter School (1999, K-12)	1,391
New Horizons Community Charter School (1999, K-7)	451
Newark Educators' Community Charter School (2009, PreK-5)	217
North Star Academy Charter School (Uncommon) (1997, K-12)	6,275
People's Preparatory Charter School (2011, 9-12)	380
Philip's Academy Charter School (2013, PreK-8)	478
Robert Treat Academy Charter School (1997, K-8)	689
Roseville Community Charter School (2011, K-4)	279
TEAM Academy Charter School (KIPP NJ) (2002, K-12)	5,253
University Heights Charter School (2006, PreK-8)	742

## KEY DEMOGRAPHICS



## CHARTER SCHOOLS BY GRADES SERVED



## ACCESS AND EQUITY

**11** charter schools, representing 90% of charter enrollment, are implementing weighted lotteries to serve more economically disadvantaged and special needs students through Newark's universal enrollment system.

The percentage of Newark charter schools serving students with disabilities has **doubled** since 2009 to 11% in 2019.

