

Newark

Public Charter School Facts

April 2025

ENROLLMENT



15
NUMBER OF
CHARTER SCHOOLS
(51 CAMPUSES)



21,232
CHARTER
ENROLLMENT



5,900
CHARTER
WAITLIST TOTAL

PERFORMANCE

+72
DAYS



READING

+94
DAYS



MATH

Newark public charter schools post best student learning gains in the nation

Students learn more in charter schools with gains of **72 additional days per year in reading** and **94 additional days per year in math** when compared to the state average. Newark's charter schools also outperform Newark's selective enrollment magnet schools in Math three years in a row.

Source: 2021 CREDO Stanford University Research

Newark has the #1 charter sector in the nation.

NJ has the #1 education system in the nation. Newark's public charter school students, **80% of whom come from low income backgrounds**, have outperformed the state average on the state test two years in a row.

75% of Newark's charter school students are enrolled in a school beating the odds.

2020 study from MarGrady Research

The strength of the public charter school sector in Newark has also **improved outcomes across all public schools**, district and charter. Over the past decade, Newark students **closed the statewide achievement gap by 45%**.

2024 study from the Progressive Policy Institute

English-Language Arts (ELA)

ALL STUDENTS

CHARTERS	51.1%
DISTRICT	30.3%
STATE	51.2%

ECONOMICALLY DISADVANTAGED

CHARTERS	51.0%
DISTRICT	29.4%
STATE	33.1%

BLACK AND LATINO STUDENTS

CHARTERS	51.2%
DISTRICT	29.2%
STATE	36.0%

2023-24 NJSLA, Grades 3-8 ELA

Math

ALL STUDENTS

CHARTERS	33.8%
DISTRICT	17.8%
STATE	39.6%

ECONOMICALLY DISADVANTAGED

CHARTERS	34.9%
DISTRICT	17.4%
STATE	20.9%

BLACK AND LATINO STUDENTS

CHARTERS	34.8%
DISTRICT	16.7%
STATE	22.1%

2023-24 NJSLA, Grades 3-8 Math, Algebra 1 & 2, Geometry

EXTENDED LEARNING

With a longer school day and year, on average Newark public charter school students receive **2 more hours** of instructional time every day, attending school for



48 additional days each year and receiving **68 more days** of instructional time, compared to district peers.

Source: 2023 NJDOE Performance Reports

SAT SCORES

Seniors at Newark's public charter high schools score **almost 100 points higher** on the SAT compared to their peers in local district schools.



Source: 2023 NJDOE Performance Reports

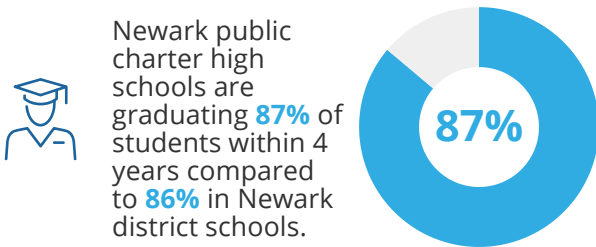


FUNDING



Charter schools in Newark receive **\$4,400 less**, per student, than district schools.

GRADUATION RATE



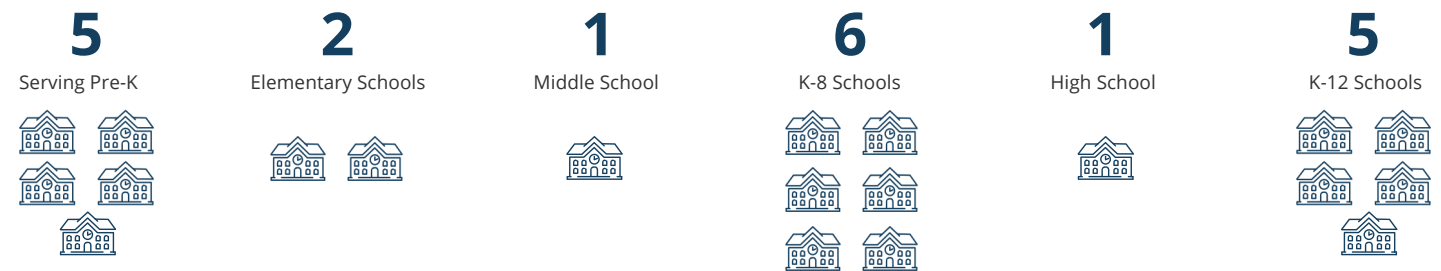
SCHOOLS

Gateway Academy Charter School (2017, K-8)	790
Discovery Charter School (1999, 4-8)	100
Gray Charter School (2000, K-8)	316
Great Oaks Legacy Charter School (2011, PreK-12)	2,153
LEAD Academy Charter School (2017, 9-12)	333
Link Community Charter School (2014, K-8)	340
Maria L. Varisco-Rogers Charter School (1999, K-8)	558
Marion P. Thomas Charter School (1999, K-12)	1,385
New Horizons Community Charter School (1999, K-7)	366
Newark Educators' Community Charter School (2009, PreK-5)	140
North Star Academy Charter School (Uncommon) (1997, K-12)	6,653
Philip's Academy Charter School (2013, PreK-8)	723
Robert Treat Academy Charter School (1997, K-8)	702
Roseville Community Charter School (2011, K-4)	285
TEAM Academy Charter School (KIPP NJ) (2002, K-12)	6,389

KEY DEMOGRAPHICS



CHARTER SCHOOLS BY GRADES SERVED



ACCESS AND EQUITY

10 charter schools, representing nearly 90% of charter enrollment, are implementing weighted lotteries to serve more economically disadvantaged and special needs students through the Newark Common App, Newark's universal enrollment system.

The percentage of students with special needs served by Newark charter schools has **doubled** since 2009 to 11% in 2024.